



# 25STONE

▪ CONCRETE VENEERS ▪

*LIGHT WEIGHT FIBRE REINFORCED CONCRETE VENEERS*

## 2STONE CONCRETE VENEERS

2Stone Concrete Veneers were developed as a cost effective and simple alternative to achieving the look of traditional “cast in place” techniques. No complicated fasteners, clipping systems, or specialty tools are required for installation, which ultimately saves our clients time and money when considering overall project costs.

Our manufacturing process combines age-old methods with innovative technologies to produce a high performance standardized product without sacrificing the spontaneity and character of the concrete.

2Stone Concrete Veneers are manufactured with lightweight fibre reinforced concrete that is suitable for interior and exterior applications. Our veneers are durable, low maintenance, and well suited for commercial uses.



Our veneers look and feel like real concrete, because that’s exactly what they are: Real Concrete. At 2Stone we celebrate the integrity, strength, lifespan, and raw natural beauty of the material.

We also offer services to assist customers in creating their very own custom concrete veneer that meets their exact specifications.



## **ADVANTAGES OVER CAST IN PLACE**

- Cost savings
- Room for insulation
- No need for additional foundation support
- Consistency of quality and finish
- Know what you're going to get before you get it!
- Time savings
- Repair ability

## **QUICK FACTS**

- Made of high quality fiber reinforced concrete
- Suitable for interior/exterior
- Simple installation with no specialty tools
- 1/2"-5/8" thick
- Non-combustible
- Untreated
- Corners can be mitred or butt jointed

## **EXAMPLES OF SUITABLE APPLICATIONS:**

- Interior
- Exterior
- Fireplace
- Feature walls
- Backsplashes
- Showers



## 2STONE BOARD FORM VENEER

The Board Form finish is wood textured with natural variations in pigment. Because every piece is an original there is no repeat pattern of any kind; further enhancing the authentic look of "cast-in-place" concrete.

**SIZE:**

72" x 6" x 1/2" (Length Tolerance +/- 1/4")

**COLOR:**

Standard grey - 100% impregnated pigment

**CONSTRUCTION:**

Lightweight fibre reinforced concrete

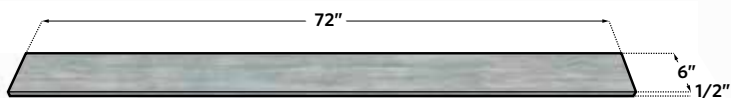
**APPROX. WEIGHT:**

+/- 4lbs/Sq.Ft

**COMBUSTIBLE:**

Contains zero combustible components

### 2Stone Board Form Veneer





## 2STONE PITTED VENEER

The Pitted finish is a distinctively beautiful concrete surface that showcases the porosity and patina you would find in naturally aged concrete.

**SIZE:**

48" x 36" x  $\frac{5}{8}$ "

16" X 36" X  $\frac{5}{8}$ "

**COLOR:**

Standard grey w/ stain - 100% impregnated pigment

**CONSTRUCTION:**

Lightweight fibre reinforced concrete

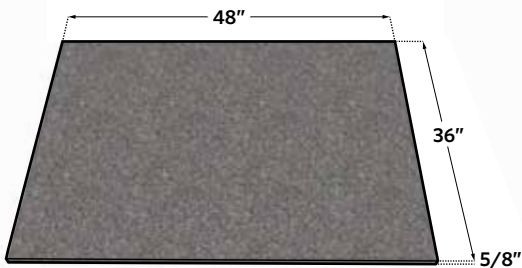
**APPROX WEIGHT:**

+6lbs/Sq.Ft

**COMBUSTIBLE:**

Contains zero combustible components

### 2Stone Pitted Veneer





## 2STONE INDUSTRIAL VENEER

The Industrial finish has a subtle wood texture and "tie holes." The holes are intended to emulate the holes left behind after wooden forms and steel rod supports were removed from conventional "cast-in-place" projects

**SIZE:**

48" x 36" x  $\frac{5}{8}$ "

**COLOR:**

Standard grey - 100% impregnated pigment

**CONSTRUCTION:**

Lightweight fibre reinforced concrete

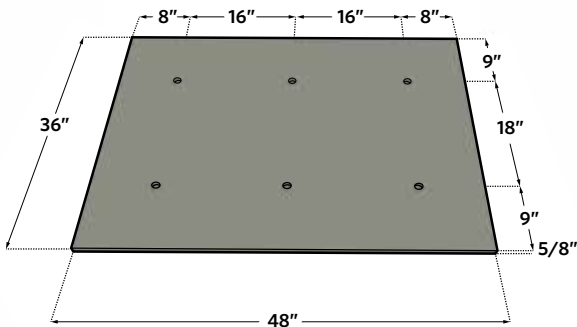
**APPROX. WEIGHT:**

+/- 6lbs/Sq.Ft

**COMBUSTIBLE:**

Contains zero combustible components

### 2Stone Industrial Veneer





## **2STONE CUSTOM VENEER**

The design team at 2Stone has over a decade of experience in high quality custom concrete fabrication as well as an extensive history providing product installation services. Our expert knowledge of the material combined with comprehensive understanding of the building process goes into every custom veneer design. Customized veneers can be tailored to many sizes, shapes, textures, and colours to meet your specifications.

**PLEASE CONTACT US FOR MORE  
INFORMATION ON CUSTOM ORDERS**



# 2STONE

**2STONE DESIGNER CONCRETE INC.**

---

PLEASE CALL OR EMAIL FOR MORE INFORMATION

403.236.3657  
INFO@2STONE.CA

FOLLOW US, AND STAY UP TO DATE  
ON CURRENT PROJECTS



**WWW.2STONE.CA**